

Goods Donation Guide

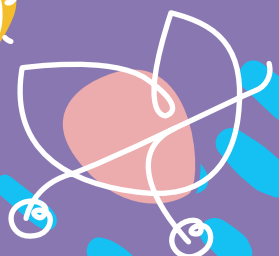
We are so grateful to receive donations of nursery and children's goods from our generous and caring community. We ask for all donations to be in excellent, clean, safe, and working condition – we only rehome donated items that you would gift to your most cherished friend. Please donate your items in a cardboard box or reusable bag.

If you have any questions about the items you'd like to rehome, please get in touch with us info@lovedandshared.org.au

We can rehome

- Clothing for babies and children
- Shoes
- Accessories
- Linen and Bedding
- Nursery Equipment
- Nursery Accessories
- Toiletries
- Toys & Books

The following pages outline specifics for each item.



Clothing for babies and children

- ✓ **We rehome** new and excellent preloved condition baby and children's clothing from size 00000 to size 16 youth/teen. All clothing must be clean or freshly laundered. We accept underwear, bloomers, cloth nappies and swimwear bottoms in **new, unworn** condition.
- ✗ **We cannot rehome** disposable nappies, preloved underwear or swimwear bottoms, maternity wear or adult clothing, bras, school or sport uniforms. Please clearly mark the size and gender on your box or bag.



Shoes

- ✓ **We rehome** new and excellent preloved condition baby, children and youth shoes up to size 7 (approx. 16 years). All shoes must be clean and in pairs. Please ensure there are no strings, laces, ribbon or detachable parts on infant and baby shoes up to age 1.

Accessories

- ✓ **We rehome** new and excellent preloved condition baby and children's accessories including bibs, wraps, socks, tights, cloth headbands, hats, scarves, beanies, mittens. All accessories must be clean or freshly laundered.
- ✗ **We cannot rehome** baby slings or jewellery. Please ensure there are no strings, laces, ribbon or detachable parts on infant and baby accessories up to age 1.

Linen and Bedding

- ✓ **We rehome** new and excellent preloved condition nursery linen and bedding including bassinet sheets, blankets, cot sheets, quilts, mattress protectors for cots and bassinets, wraps, pram blankets, baby sleeping bags, baby face washers, baby towels.
- ✗ **We cannot rehome** baby slings, bumpers, pillows, change pads, nursing pillows, sleeping pouches, beanbags, polar fleece baby sleeping bags.
- ✓ **We rehome** new and excellent preloved condition children's **single size** linen and bedding including sheet sets, doona covers, pillowcase sets, quilts.
- ✗ **We cannot** rehome doonas, pillows, children's or adults' towels, cushions, curtains, beanbags, or bedding and linen larger than size single.

Nursery Equipment

We currently accept a limited selection of new and excellent preloved condition nursery equipment. We ask for all items to be clean, safe and in working condition. Please ensure there is no damage, signs of wear, or personal names on items.

All donated items must comply with Australian Safety Standards, we will safety check your items during your drop off session.



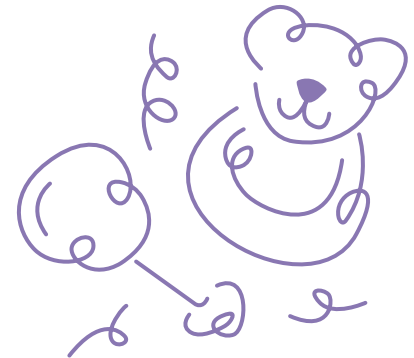
Items we currently accept

Requirements

Bassinets	No cane, cradle, rocking or portable, must have mesh sides; no solid sides.
Baths	No bath aids or stands.
Bouncers and rockers	Must have 3-point safety harness and be less than 8 years old.
Carriers	Baby Bjorn or similar front carriers only.
Car seat	Capsules, reversible, booster seats must have tether strap, no foam boosters. Must meet standard AS/NZS 1754. Must be less than 8 years old and never been in an accident. No portable travel chairs.
Change mats	Change mats only – no change tables.
Cots	Must meet Standard AS/NZS 2172:2003 with manual, if available, and bolts. Less than 8 years old only. No cots with metal clips on the drop sides. If donated with a mattress – it must be the correct size for the cot.
High chairs	Must have safety harness and be less than 8 years old.
Portacots	Must have mesh air vents on two sides, no rips, or tears. Must have firm, snugly fitting mattress supplied by the manufacturer.
Prams and strollers	No umbrella strollers – must meet Standard AS/NZS 2088:2000, must be less than 8 years old, must have 5-point harness, faultless brakes, sun hood & carry basket. Strollers must fully recline. Fixed wheels are OK.

Nursery Accessories

- ✓ **We currently** accept a limited selection of nursery accessories including new bottles, and new or excellent preloved condition sterilisers and bottle warmers. Please ensure items are clean, safe and in working condition.



Toiletries

- ✓ **We currently** accept a limited selection of new, unopened and in date toiletries for newborn babies to age 1, including baby shampoo and conditioner, nappy cream, baby lotion, baby oil, baby soap or body wash. We prefer natural, organic and eco-friendly toiletries.



Toys & Books

We accept new and excellent preloved condition toys and books for newborns to teenagers. All items must be small enough to fit into a pillowcase.

- ✓ **We accept the following categories of toys:**
 - Imaginary play: dolls, cars, trains, tool sets, action and character figurines, dress-ups, pretend food etc.
 - Games: puzzles, board games.
Arts & Craft: paints, crafts, drawing kits, construction kits.
 - Educational: science experiments, learning games.
 - Soft/plush toys: small enough to fit into a supermarket bag.
 - Sports: balls racquets, skipping ropes etc.
Books: ensure pages are clean with no yellowing.



- ✗ **We cannot rehome** bath toys, toys that are too large to fit into a pillowcase, bikes and scooters, CDs, DVDs, activity mats, baby gyms.